

1206 HOLTON LN - TAKOMA PARK, MD 20912

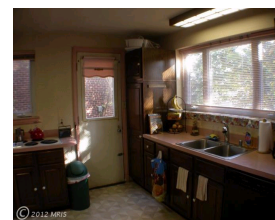
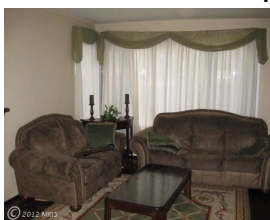
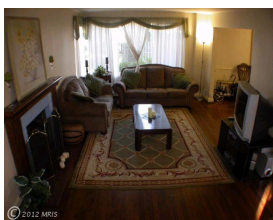
4 Bedrooms, 3 Full Baths
MLS: MC7526233

Classic Brick Colonial in Great Condition. Oversize Windows bathe Home in Light. Lovely Hardwood Floors. Large Kitchen. Ample Dining Room w/Sliding Doors to Patio. 2 Cozy Wood-Burning Fireplaces. Fully Finished Lower Level w/ Kitchenette. Driveway. Nice Fenced Backyard. Steps to Shops & Restaurants.



Henry Prenskey
Long & Foster Real Estate, Inc.
(301) 455-4427 office
Hank@TakomaHomes.com
www.TakomaHomes.com

Purchase Price: \$249,900
Annual Taxes \$5,568
Annual Insurance (Estimated): \$625



Loan Program	FHA 30 Year Fixed			30 Year Fixed			30 Year Fixed		
Purchase Price	\$ 249,900			\$ 249,900			\$ 249,900		
Down Payment	\$ 8,747 (3.50%)			\$ 24,990 (10.00%)			\$ 49,980 (20.00%)		
Loan Amount	\$ 243,565			\$ 224,910			\$ 199,920		
Term (Months)	360 Points APR			360 Points APR			360 Points APR		
Interest Rate	3.750% 1.000 4.06%			3.875% 1.000 4.29%			3.875% 1.000 4.05%		
Principal + Interest*	\$ 1,127.99			\$ 1,057.61			\$ 940.10		
Mortgage Insurance Premium	\$ 22.91			\$ 93.71			\$ 0		
HOA/Dues/Fees	\$ 0			\$ 0			\$ 0		
Insurance Escrow	\$ 52.06			\$ 52.06			\$ 52.06		
Tax Escrow	\$ 464.00			\$ 464.00			\$ 464.00		
Total Est Monthly Payment	\$ 1,666.96			\$ 1,667.39			\$ 1,456.16		

For informational purposes only: Long & Foster Real Estate, Inc. is not a mortgage lender. Contact Prosperity Mortgage directly for more information about its products and your eligibility.



Contact your loan consultant for a mortgage that fits your needs:



Karen VanZandt
NMLS# 193180
700 King Farm Blvd, Ste 125
Rockville, MD 20850
(240) 497-1772 office
(301) 613-5780 cell
Karen.VanZandt@ProsperityMortgage.com
www.prosperitymortgage.com/karen-vanzandt



Generated on: 1/5/2012. APR= Annual Percentage Rate. *Payment Streams: FHA 30 YR: #1-359=\$1,128 at 3.75%, #360=\$1,126 at 3.75% 30 Yr Fx: #1-359=\$1,058 at 3.875%, #360=\$1,058 at 3.875% 30 Yr Fx: #1-359=\$940 at 3.875%, #360=\$939 at 3.875%

  These mortgage rates apply only in certain conditions. Your loan's final rate will depend on the specific characteristics of the loan transaction and your credit profile up to the time of closing. The displayed APRs include total points and additional prepaid finance charges but do not include other closing costs. On adjustable rate loans, rates are subject to increase over the life of the loan. Rates available as of date of printing and subject to change without notice. ** Total Est Initial Housing Payment amounts include principal and interest for both Primary and Secondary Financing as well as tax, insurance, homeowner dues. Payment amounts include mortgage insurance if the down payment is less than 20% or the loan product is FHA. Down payment amount excludes any secondary financing. All firsts mortgage products are provided by Prosperity Mortgage Company. Prosperity Mortgage Company is licensed in New Jersey as a Department of Banking Mortgage Banker and in Pennsylvania by the Department of Banking. Prosperity Mortgage Company may not be available in your area. © Prosperity Mortgage Company. All Rights Reserved. Prosperity NMLS# 193180.

