

111 Lee Avenue #207 & #208 ~ Takoma Park MD 20912

\$199,900
EACH

The Takoma Condominium

Revived 46-unit, 1950's-era
Brick Beauty in the heart of
Takoma Park, walking distance to
Metro, Old Town and Shops.

FEATURES

Coat Closet

Living Room ~ 18'6" x 12'11"
Hardwood Floor

Dining Area ~ 12'2" x 9'1"
Hardwood Floor

Kitchen ~ 8'0" x 7'8"
Granite Countertops
Stainless Steel Appliances
Refrigerator with Ice Maker
Built-In Microwave
Stove with Rangehood with Light and Fan

Bedroom #1 ~ 18'6" x 10'10"
Hardwood Floor
Double Closet

Bedroom #2 ~ 14'10" x 10'8"
Hardwood Floor
Double Closet

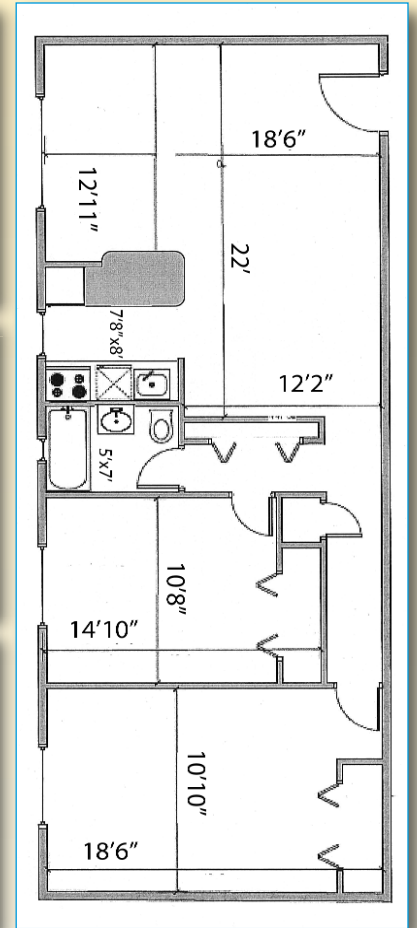
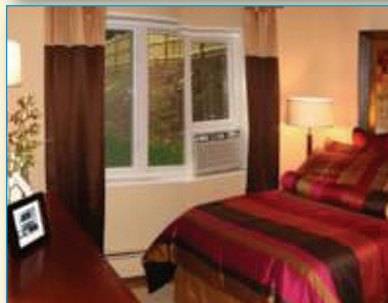
Bath
Granite Sinktop
Ceramic Tile Walls and Floor

AMENITIES

Controlled Access to Building
Newly Remodeled Lobby
New Windows Throughout
Elevator
Reserved Parking Space

For more information visit:
www.TakomaHomes.com

Information deemed
reliable but not guaranteed



LEGAL INFORMATION

Year Built: 1956 Year Renovated: 2006
Each Unit's Square Footage: 958
Estimated property tax and non-tax charges in the first full
fiscal year of ownership is \$3,384.82 each
Condo Fee: \$368 per month each (includes heat, gas, sewer & water.)

Hank Prensky

301-455-4427

o: 240-497-1700

Hank@TakomaHomes.com
www.TakomaHomes.com

